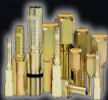


EGO SOLUTIONS



Email: sales@egosolutions.us

Email: operations@egosolutions.us

16801 Boy Scout Rd, Odessa, FL, 33556

Ph: +1-813-361-0616 Fax: 1-866-591-5917

CAMLOCK QUICK COUPLING

Type A

Male Adapter X Female



Type C

Female Coupler X Hose Shank



Type E

Male Adapter X Hose



Type DC

Dust Cap



Type B

Female Coupler X Male



Type D

Female Coupler X Female



Type F

Male Adapter X Male



Type DP

Dust Plug



CAMLOCK QUICK COUPLING

Type A

Male Adapter X Female

STAINLESS STEEL

1/2"
3/4"
1"
1-1/8"
1-1/2"
2-1/2"
3"
4"
6"



Type B

Female Coupler X Male

STAINLESS STEEL

1/2"
3/4"
1"
1-1/8"
1-1/2"
2"
2-1/2"
3"
4"
6"



Type C

Female Coupler X Hose Shank

STAINLESS STEEL

1/2"
3/4"
1"
1-1/8"
1-1/2"
2-1/2"
3"
4"
6"



Type D

Female Coupler X Female

STAINLESS STEEL

1/2"
3/4"
1"
1-1/8"
1-1/2"
2"
2-1/2"
3"
4"
6"



Type E

Male Adapter X Hose

STAINLESS STEEL

1/2"
3/4"
1"
1-1/8"
1-1/2"
2"
2-1/2"
3"
4"
6"



Type F

Male Adapter X Male

STAINLESS STEEL

1/2"
3/4"
1"
1-1/8"
1-1/2"
2"
2-1/2"
3"
4"
6"



Type DC

Dust Cap

STAINLESS STEEL

1/2"
3/4"
1"
1-1/8"
1-1/2"
2-1/2"
3"
4"
6"



Type DP

Dust Plug

STAINLESS STEEL

1/2"
3/4"
1"
1-1/8"
1-1/2"
2"
2-1/2"
3"
4"
6"



CAMLOCK QUICK COUPLING

Type A

Male Adapter X Female

BRASS
1/2"
3/4"
1"
1-1/4"
1-1/2"
2-1/2"
3"
4"
5"
6"



Type B

Female Coupler X Male

BRASS
1/2"
3/4"
1"
1-1/4"
1-1/2"
2-1/2"
3"
4"
5"
6"



Type C

Female Coupler X Hose Shank

BRASS
1/2"
3/4"
1"
1-1/4"
1-1/2"
2-1/2"
3"
4"
5"
6"



Type D

Female Coupler X Female

BRASS
1/2"
3/4"
1"
1-1/4"
1-1/2"
2-1/2"
3"
4"
5"
6"



Type E

Male Adapter X Hose

BRASS
1/2"
3/4"
1"
1-1/4"
1-1/2"
2-1/2"
3"
4"
5"
6"



Type F

Male Adapter X Male

BRASS
1/2"
3/4"
1"
1-1/4"
1-1/2"
2-1/2"
3"
4"
5"
6"



Type DC

Dust Cap

BRASS
1/2"
3/4"
1"
1-1/4"
1-1/2"
2-1/2"
3"
4"
5"
6"



Type DP

Dust Plug

BRASS
1/2"
3/4"
1"
1-1/4"
1-1/2"
2-1/2"
3"
4"
5"
6"



CAMLOCK QUICK COUPLING

Type A

Male Adapter X Female

PP
1/2"
3/4"
1"
1-1/4"
1-1/2"
2"
3"
4"



Type B

Female Coupler X Male

PP
1/2"
3/4"
1"
1-1/4"
1-1/2"
2"
3"
4"



Type C

Female Coupler X Hose Shank

PP
1/2"
3/4"
1"
1-1/4"
1-1/2"
2"
3"
4"



Type D

Female Coupler X Female

PP
1/2"
3/4"
1"
1-1/4"
1-1/2"
2"
3"
4"



Type E

Male Adapter X Male

PP
1/2"
3/4"
1"
1-1/4"
1-1/2"
2"
3"
4"



Type F

Male Adapter X Male

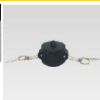
PP
1/2"
3/4"
1"
1-1/4"
1-1/2"
2"
3"
4"



Type DC

Dust Cap

PP
3/4"
1"
1-1/2"
2"
3"
4"



Type DP

Dust Plug

PP
3/4"
1"
1-1/2"
2"
3"
4"



CAMLOCK QUICK COUPLING

Type A

Male Adapter X Female

NYLON
1/2"
3/4"
1"
1-1/4"
1-1/2"
2"
3"
4"



Type B

Female Coupler X Male

NYLON
1/2"
3/4"
1"
1-1/4"
1-1/2"
2"
3"
4"



Type C

Female Coupler X Hose Shank

NYLON
1/2"
3/4"
1"
1-1/4"
1-1/2"
2"
3"
4"



Type D

Female Coupler X Female

NYLON
1/2"
3/4"
1"
1-1/4"
1-1/2"
2"
3"
4"



Type E

Male Adapter X Hose

NYLON
1/2"
3/4"
1"
1-1/4"
1-1/2"
2"
3"
4"



Type F

Male Adapter X Male

NYLON
1/2"
3/4"
1"
1-1/4"
1-1/2"
2"
3"
4"



Type DC

Dust Cap

NYLON
3/4"
1"
1-1/2"
2"
3"
4"



Type DP

Dust Plug

NYLON
3/4"
1"
1-1/2"
2"
3"
4"



CAMLOCK QUICK COUPLING

AR Male Adapter X Female

SIZE	
2"x1-1/2"	
2"x3"	
3"x2"	
3"x4"	
4"x3"	
4"x6"	
6"x4"	



BR Female Coupler X Male

SIZE	
1-1/2"x1"	
2"x1-1/2"	
3"x2"	
3"x4"	
4"x3"	



DD Female Coupler X Female Coupler

SIZE	
1-1/2"x1-1/2"	
2"	
3"	
3"x4"	
4"	



DR Female Adapter X Female

SIZE	
1-1/2"x1"	
2"x1-1/2"	
3"x2"	
4"x3"	



FR Male Adapter X Male

SIZE	
2"x1-1/2"	
1-1/2"x3"	
2"x3"	
3"x1-1/2"	
3"x2"	
3"x4"	
4"x3"	
4"x6"	



CR Female Coupler X Hose Shank

SIZE	
2"x1-1/2"	
3"x2"	
3"x4"	
4"x3"	



SA Spool Adapter

SIZE	
1"	3"x4"
1-1/4"	4"
1-1/2"	4"x1-1/2"
1-1/2"x2"	4"x2"
2"	4"x6"
2"x3"	6"
3"	



DA Female Coupler x Male Adapter

SIZE	
1-1/2"x1"	3"x4"
1-1/2"x2"	4"x1-1/2"
2"x1-1/2"	4"x2"
2"x3"	4"x3"
2"x4"	4"x6"
3"x1-1/2"	6"x4"
3"x2"	



GUILLEMIN QUICK COUPLING

Hose Tail with Latch



Material: Aluminium Or Stainless Steel

SIZE	1"
	1-1/2"
	2"
	2-1/2"
	3"
4"	

Female without Latch



Material: Aluminium Or Stainless Steel

SIZE	1"
	1-1/2"
	2"
	2-1/2"
	3"
4"	

Male without Latch



Material: Aluminium Or Stainless Steel

SIZE	1"
	1-1/2"
	2"
	2-1/2"
	3"
4"	

Cap+Latch+Chain



Material: Aluminium Or Stainless Steel

SIZE	1"
	1-1/2"
	2"
	2-1/2"
	3"
4"	

Head (Big+Small) with Latch



Material: Aluminium Or Stainless Steel

SIZE	2" x 3"
	2" x 2-1/2"
	2" x 2"
	1-1/2" x 3"
	1-1/2" x 2-1/2"
	1-1/2" x 2"
	1" x 3"
	1" x 2-1/2"
	1" x 2"
	3/4" x 2-1/2"
3/4" x 2"	

Female with Latch



Material: Aluminium Or Stainless Steel

SIZE	1"
	1-1/2"
	2"
	2-1/2"
	3"
4"	

Male with Latch



Material: Aluminium Or Stainless Steel

SIZE	1"
	1-1/2"
	2"
	2-1/2"
	3"
4"	



AIR HOSE COUPLING (U.S. TYPE)

Universal Hose end



Material: Cast Iron Or Malleable Steel

SIZE	1/4"
	3/8"
	1/2"
	3/4"
	1"

Universal Male end



Material: Cast Iron Or Malleable Steel

SIZE	1/4"
	3/8"
	1/2"
	3/4"
	1"

Universal Female end



Material: Cast Iron Or Malleable Steel

SIZE	1/4"
	3/8"
	1/2"
	3/4"
	1"

Universal Hose end



Material: Cast Iron Or Malleable Steel

SIZE	1-1/4"
	1-1/2"
	2"

Universal Female end



Material: Cast Iron Or Malleable Steel

SIZE	1-1/4"
	1-1/2"
	2"

AIR HOSE COUPLING (European TYPE)

Universal Hose end



Material: Cast Iron Or Malleable Steel

SIZE	1/4"
	3/8"
	1/2"
	3/4"
	1"

Universal Male end



Material: Cast Iron Or Malleable Steel

SIZE	1/4"
	3/8"
	1/2"
	3/4"
	1"

Universal Female end



Material: Cast Iron Or Malleable Steel

SIZE	1/4"
	3/8"
	1/2"
	3/4"
	1"

AIR HOSE COUPLING (European TYPE)

Universal Hose end



Materia| BRASS

SIZE	3/8"
	1/2"
	3/4"
	1"
	1-1/4"

Universal Male end



Materia| BRASS

SIZE	3/8"
	1/2"
	3/4"
	1"
	1-1/4"

Universal Female end



Materia| BRASS

SIZE	3/8"
	1/2"
	3/4"
	1"
	1-1/4"

2 & 4 bolt clamp



B-4	1/2"	15/16"-1-1/16"
B-5	1/2"	1-1/16"-1-3/16"
B-9	3/4"	1-5/16"-1-1/2"
BU-9	3/4"	1-3/16"-1-5/16"
B-10	3/4"	1-1/2"-1-11/16"
B-14	1"	1-11/16"-1-15/16"
BU-14	1"	1-17/32"-1-23/32"
B-15	1"	1-15/16"-2-1/8"
B-19	1-1/4"	2-1/8"-2-6/8"
BU-24	1-1/2"	2-3/32"-2-9/32"
BU-29	2"	2-1/2"-2-25/32"
B-34	2-1/2"	3-1/2"-3-15/16"
BU-34	2-1/2"	3-3/32"-3-7/16"
B-35	3"	3-13/16"-4-1/16"

3-WAY



BLANK END



STORZ COUPLING

Female

SIZE
1/2"
3/4"
1"
1-1/2"
2"
2-1/2"
3"
4"
5"



Male

SIZE
1/2"
3/4"
1"
1-1/2"
2"
2-1/2"
3"
4"
5"



Hose End

SIZE
1/2"
3/4"
1"
1-1/2"
2"
2-1/2"
3"
4"
5"



Sealed Cap

SIZE
1/2"
3/4"
1"
1-1/2"
2"
2-1/2"
3"
4"
5"



BAUER COUPLING



It includes Male Spanner/Female Gasket

Material: Galvanized Steel

2"
3"
3-1/2"
4"
6"
8"
10"

HOSE CLAMP



American worm-drive clamp

(Band width: 8mm and 12.7mm)

6-13mm	19-44mm	78-101mm
6-16mm	29-51mm	91-114mm
11-20mm	34-57mm	95-127mm
13-23mm	40-64mm	100-140mm
16-25mm	46-70mm	110-150mm
16-32mm	53-76mm	
21-38mm	72-90mm	



Germany Type clamp

(Band width: 9mm and 12.7mm)

9-13mm	31-48mm	104-127mm
13-16mm	38-54mm	127-146mm
13-19mm	44-60mm	146-159mm
16-22mm	50-70mm	149-178mm
19-25mm	60-80mm	175-203mm
22-29mm	70-90mm	200-229mm
25-35mm	83-102mm	225-254mm
28-41mm	95-115mm	251-281mm



Superior clamp

Material: Zn-plated steel and Stainless steel

D17-19	D86-91
D20-22	D92-97
D23-25	D98-103
D26-28	D104-112
D29-31	D113-121
D32-35	D122-130
D36-39	D131-139
D40-43	D140-148
D44-47	D149-161
D48-51	D162-174
D52-55	D175-187
D56-59	D188-200
D60-63	D201-213
D64-67	D214-226
D68-73	D227-239
D74-79	D240-252
D80-85	

HOSE CLAMP

Double-bolt clamp



Size	Clamp Range (Min)	Clamp Range (Max)
SL-22	21/32"	7/8"
SL-29	7/8"	1-9/64"
SL-34	1-5/32"	1-11/32"
SL-40	1-5/16"	1-19/32"
SL-49	1-5/8"	1-15/16"
SL-60	1-7/8"	2-3/8"
SL-76	2-3/8"	3-7/16"
SL-94	3-1/2"	3-11/16"
SL-115	3-3/4"	4-1/2"
SL-400	3-1/2"	4"
SL-463	4-1/16"	4-5/8"
SL-525	4-11/16"	5-1/4"
SL-550	5"	5-1/2"
SL-600	5-5/16"	6-1/6"
SL-675	6-1/8"	6-7/8"
SL-769	6-15/16"	7-5/8"
SL-818	7-11/16"	8-3/16"
SL-875	8-1/4"	8-7/8"
SL-988	8-15/16"	9-7/8"
SL-1125	9-15/16"	11-3/8"
SL-1275	11-3/16"	13"

Double-wire hose clamp



Material: Stainless Steel/Carbon Steel

SPRAL CLAMP

Material: Steel (Plated Zn)

1-1/2"
2"
2-1/2"
3"
4"
5"
6"
8"
10"
12"



PIPE CLAMP



1/4"	1-1/4"
5/16"	1-1/2"
3/8"	2"
1/2"	2-1/2"
5/8"	2-3/4"
3/4"	3"
7/8"	4"
1"	

HOSE TO HOSE



1/8"X20-1/4"
1/4"X38"

PIPE FITTING

PIN LUG

SIZE	
	1"
	1-1/4"
	1-1/2"
	2"
	3"



SHORT SHANK FITTING

Material	BRASS
	1/2"
	5/8"
	3/4"
	1"



NYLON COUPLING

MHE

SIZE	
MHE-1	3/4" X 50mm
MHE-2	1" X 50mm
MHE-3	1-1/4" X 50mm



HE

SIZE	
HE-1	3/4" X 1-1/4"
HE-2	1" X 1"
HE-3	1-1/4" X 1-1/4"



Q

SIZE	
Q1	3/4" X 50mm
Q2	1" X 50mm
Q3	1-1/4" X 50mm



PP Camlock 90° Degree





PIPE FITTING

STRAINER

Material: Galvanized Steel

1"
1-1/2"
2"
2-1/2"
3"
4"
6"
8"



K.C. NIPPLE & HOSE MENDER

Material: Galvanized Steel / Stainless Steel / Brass

1/2"	3"
3/4"	4"
1"	5"
1-1/4"	6"
1-1/2"	8"
2"	10"
2-1/2"	12"



MALE PIPE STEM ONLY

Material: Galvanized Steel

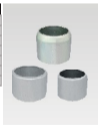
1/2"
3/4"
1"
1-1/4"
1-1/2"
2"
2-1/2"
3"
4"
5"
6"



FERRULES

Material: Galvanized Steel / Stainless Steel

1"
1-1/2"
2"
2-1/2"
3"
4"
6"



SPANNER-A



SPANNER-B



SPANNER-C



CAMLOCK PARTS

Storz Gasket

SIZE

1/2"
3/4"
1"
1-1/2"
2"
2-1/2"
3"
4"
5"



CAMLOCK GASKET

Material: NBR, EPDM, Viton

1"
1-1/2"
2"
2-1/2"
3"
4"
6"



PIN

Material: ALUMINUM, STAINLESS STEEL, CARBON STEEL

3/4"
1"
2"
3"
6"



HANDLE

Material: STAINLESS STEEL OR BRASS

3/4"
1"
2"
3"
6"



SAFETY PIN



CHAIN



Material: Stainless Steel
Carbon Steel

CAMLOCK WITH FLANGE





AUTOMOBILE PARTS

Warning Triangle (E-mark E11)

WT-1



WT-2



WT-3



WT-4



WT-5



WT-6

